

“The Loadhog Pally system has significantly reduced our needless waste in material and labour time. These can now be allocated in a much more rewarding way.”

Marc Andelar, system administrator, Bizerba SE & Co. KG

Experienced Benefits



Less Stress on Workforce

The Pally is easier to handle than previous method of goods transportation (EPAL), which has consequently reduced stress on the workforce.



Increased Labour Efficiency

Contact points and double handling reduced saving the workforce 30 km per year.



Less Packaging Waste

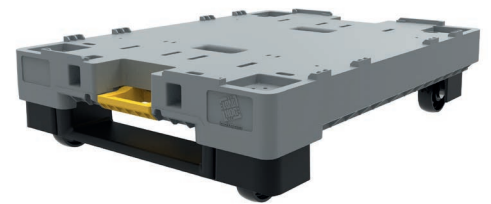
Environmental pollution such as packaging waste is reduced.



Space Saving

Less factory space needed to transport, trade and store materials and goods. For this case about 25% of the original space used, has now been freed for other work / materials.

Product Solution



Pally (pallet dolly combo)

Total Saving

170 hours
Labour Saved
per year